

DEEP SEA CHESS



First/Last Name:

School/Class:

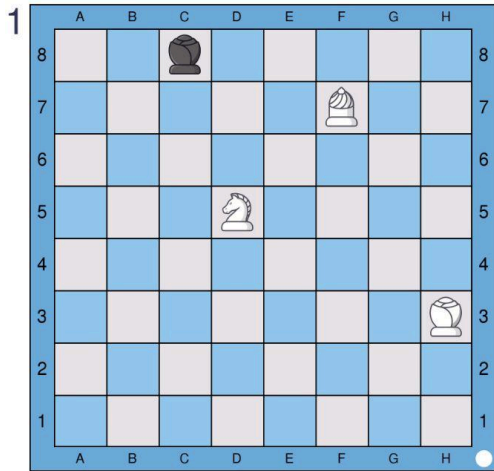
Date:

TOPIC

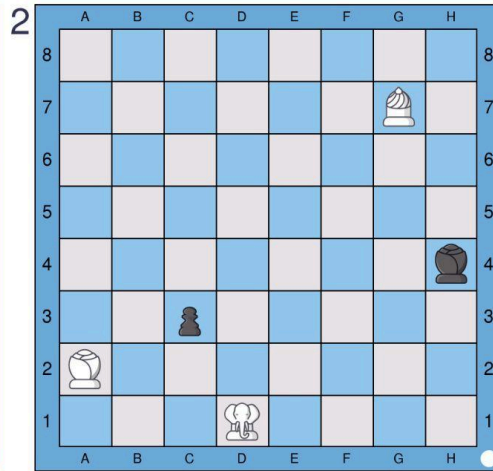
Sample checkmate positions - I
Aided Vizier (Queen) mate

Prepared by:
FM, FT, FSI Tamer Karatekin

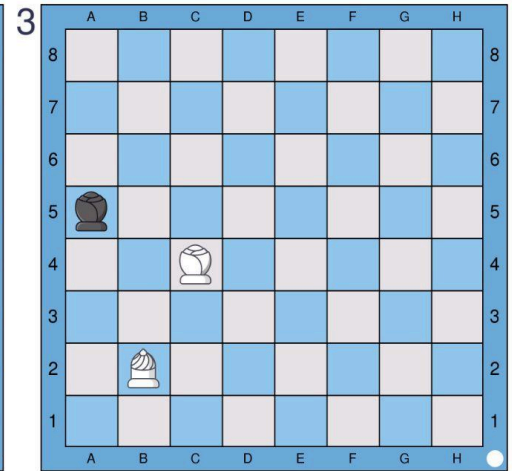
There are three ways to get rid of the check threat. These are moves made by: a) escaping with the shah (king), b) capturing the attacking piece (with the shah (king) or another piece), c) blocking the threat. However, if the attack on the king cannot be parried, the chess match ends in checkmate. In the exercises below, draw with an arrow the white move that makes checkmates black in one move.



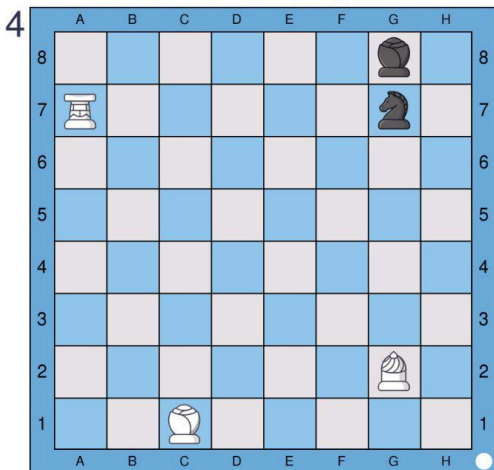
Draw the checkmating move.



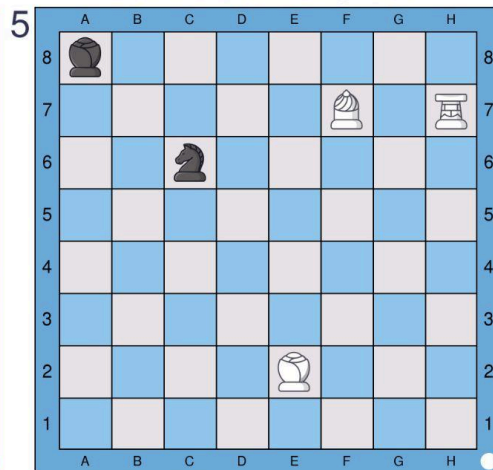
Draw the checkmating move.



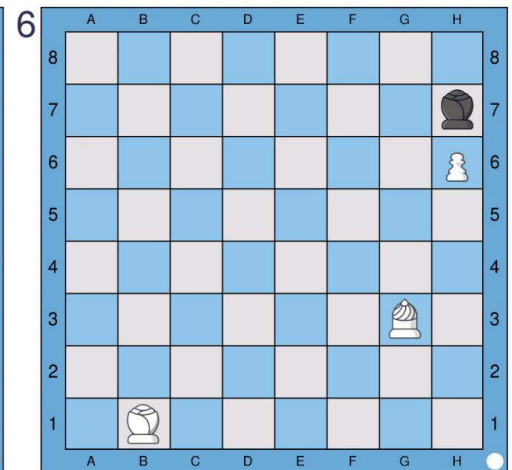
Draw the checkmating move.



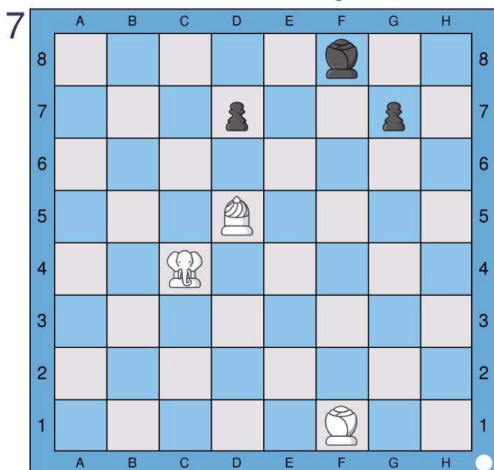
Draw the checkmating move.



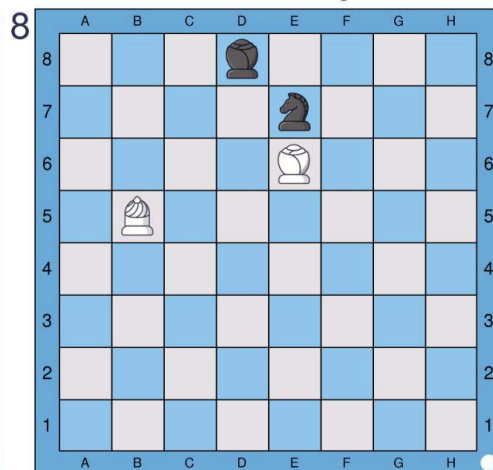
Draw the checkmating move.



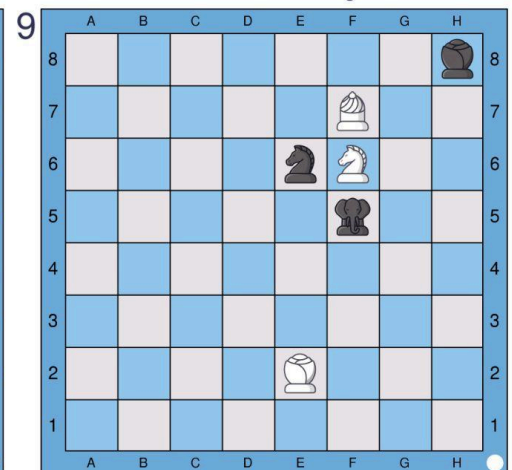
Draw the checkmating move.



Draw the checkmating move.



Draw the checkmating move.



Draw the checkmating move.